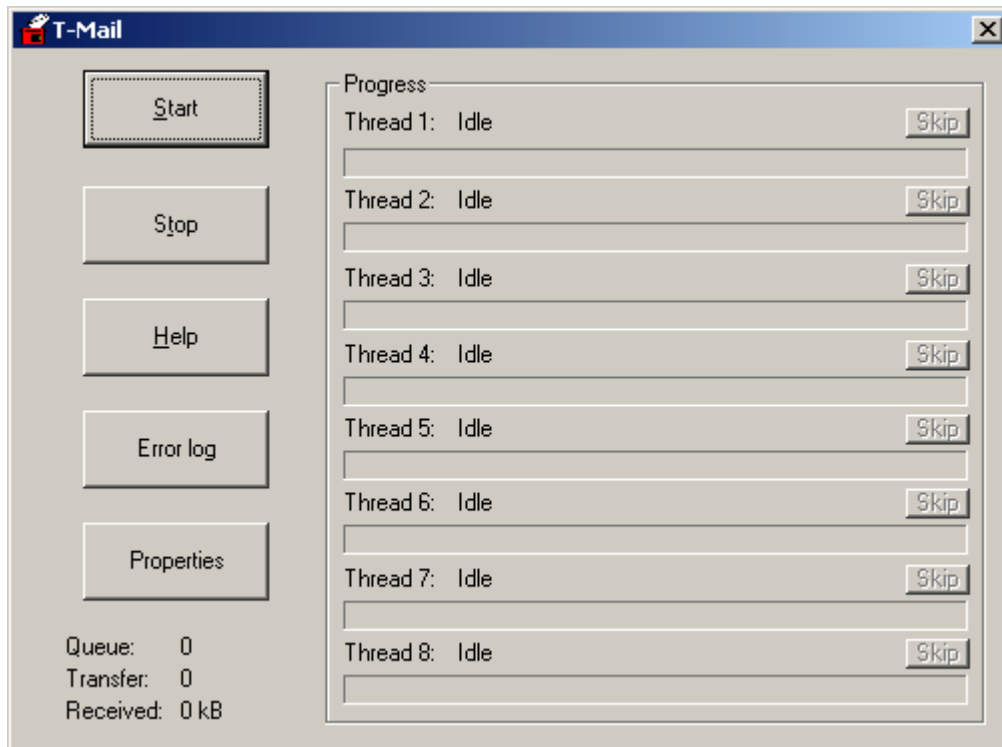


Using Tiny-Mail



The main application window is divided into two parts:

On the left side you find buttons that enable activating different program functions:

- **Start** begins all the operations that are configured in Tiny-Mail (sending and receiving mail, sending and receiving news). A Dial-up connection is established before the transmission if Tiny-Mail is configured to do so.
- **Stop** halts all operations that are currently in progress and removes all tasks from the task queue. That operation is not always immediate (e.g. the Tiny-Mail server will wait until the currently received message is obtained while receiving mail). The Dial-up connection will be interrupted after transmission if Tiny-Mail has been configured to do so.
- **Help** runs the help system of the program.
- **Error log** displays error reports, including all errors that occurred from the last activating of the program (e.g. connection interruption, errors received from remote servers, etc.).
- **Properties** runs the configuration of the program.

Below the buttons you can find information about the status of operations:

- **Queue** indicates the amount of tasks that are waiting to be executed (a single task is e.g. sending a single mail message or checking for new e-mail on a single account)
- **Transfer** indicates the average amount of bytes per second that are received from remote servers
- **Received** shows the amount of kilobytes of data that has been obtained since the last start of the Tiny-Mail server

On the right side of the window you can find a frame entitled **Progress**. It displays the current state of each program thread (each thread is responsible for performing a single operation - Tiny-Mail can handle maximum 8 threads at the same time).

The current operation and its progress is shown for each thread (e.g. mail reception or mail sending). One can stop a single operation using the **Skip** button (process interruption will not be immediate - the same as in case of pressing the **Stop** button).

"Click and forget"

Tiny-Mail has very sophisticated abilities to work fully automatically (it starts carrying out operations on

various conditions). Users who want to have full control of its work also won't be disappointed. It's possible to configure Tiny-Mail to run all the defined tasks by just one mouse click. After pressing the **Start** button Tiny-Mail will establish the Dial-up connection, receive and send all messages and close the connection in the end. No special manual operations are required from the user (e.g. connection establishing, mail reception activating, etc.).

There is also a possibility to execute only some operations:

Selective use

If you want to carry out only some operations (e.g. only to send and receive mail) you can click the right mouse button on the **Start** button. A pop-up menu appears and you will be able to select only some of the given operations. Possible operations are:

- **Send mail**
- **Get mail**
- **Send mail and usnet messages**
- **Send and get mail**
- **Send and get usenet messages**
- **Send and get mail, send usenet messages**
- **Send and get mail and usenet messages**

Choosing only one of the given positions will result in sending the selected operation to the operation queue. There is no problem to choose first one option and straight after it another one.

Inspecting the program status

Tiny-Mail gives the opportunity to browse a detailed report of executed operations. It's especially useful if Tiny-Mail is configured to establish Dial-up connections on its own and executes all operations automatically.

By pressing **Error log** you will be shown a report including:

- Date
- Time
- Error message

All events that can be considered as errors are here reported, e.g.:

- Dial-up connection establishing failure (e.g. the telephone line was engaged or the access password was incorrect)
- Wrong mailbox password
- Dial-up connection failure during trasmission
- SMTP/POP3/NNTP server error
- No connection to remote server

One kind of errors is handled by Tiny-Mail in a special way, namely the authentication error or if the service is blocked while trying to establish a Dial-up connection. In that case the automatical Dial-up connection establishing option will become disabled. This will prevent to increase the costs of Dial-up connections if the Internet operator blocked his service or changed the access password.